

# US-60-1RX

## 6,000 lb Capacity

### Rack & Pinion Construction Elevator

## SPECIFICATIONS

Lifting Capacity	6,000 lb (2,700 kg)
Lifting Speed	150 ft/min (300 ft/min optional) 46 m/min (91 m/min optional)
Passengers	30
Car Dimensions	12'4" L x 4'8" W x 7'2" H (3.8m L x 1.4m W x 2.2m H)
Drive Motor	35 HP (26 kW)
Brake	Spring Set Multiple Disc Brake
Motor Control	Variable Frequency Drive
Power Required	480V, 60 Hz, 3 Phase, 100 amps
Full Load Current	43 amps (Normal Operating Condition)
Base Unit Weight	19,750 lb (@ 150 ft/min) (8,970 kg) 22,150 lb (@ 300 ft) (10,050 kg)
Tower Weight	500 lb (227 kg) per 5' (1.5m) section
Wall Ties	Adjustable Pinned Struts
Wall Tie Spacing	30' (9.1m) Maximum

## STANDARD FEATURES

- Fully Assembled Enclosed Car
- Over Speed Safety Governor
- Two Vertically Bi-Parting Car Gates
- Control and Limit Switches
- Counterweight & Cathead Assemblies
- Manual Hand Lever Control
- Base Fence Enclosure with Landing Gate
- Base Power Disconnect (100 amp)
- Car & Counterweight Buffers
- Power Cord & Counterweight Cables
- Power Cord Trailing Wheel
- Interior Car Lighting

## OPTIONAL FEATURES & SERVICES

- Landing Gates
- Voice Communication
- Base Landing Platform
- Spare Parts & Service
- Turnkey Installation
- Explosion Proof
- Maintenance
- 650 to 8,000 lb Capacities

- Custom Car Sizes
- Drop Tests & Inspections
- Elevator Operators
- New & Refurbished Sales
- Test Weights
- Custom Car Door Configurations
- ANSI A17.1 Elevators



**McDONOUGH**<sup>®</sup>  
Elevators

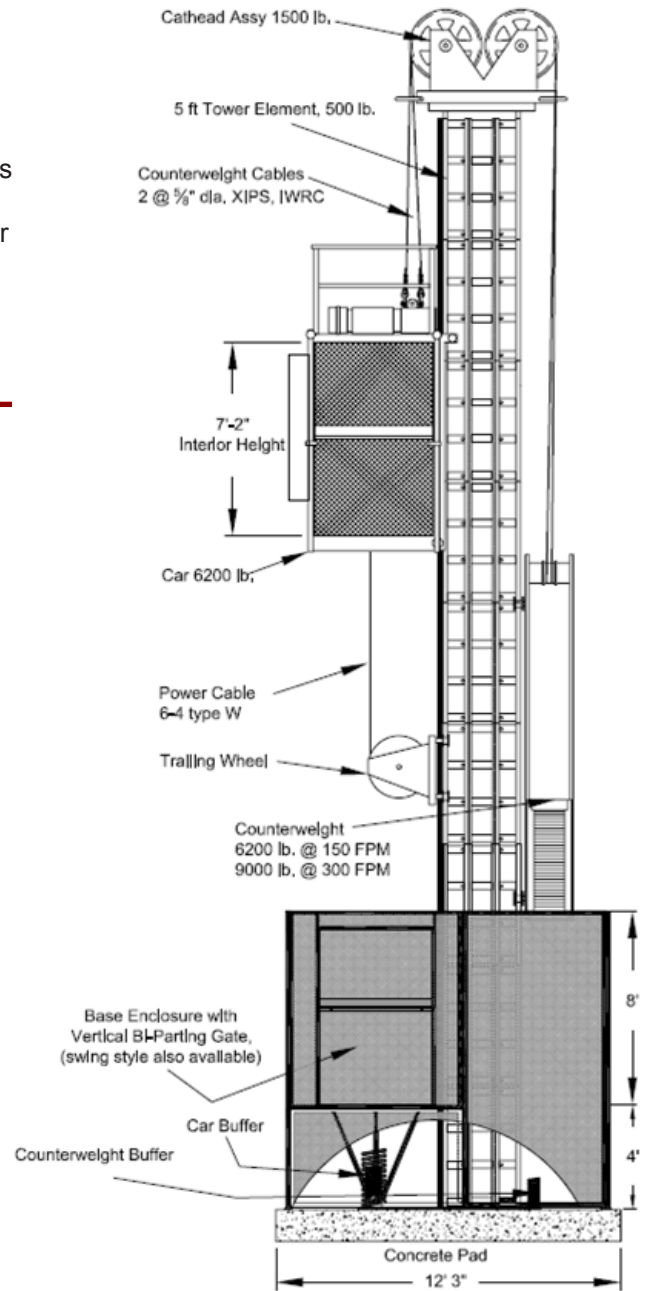
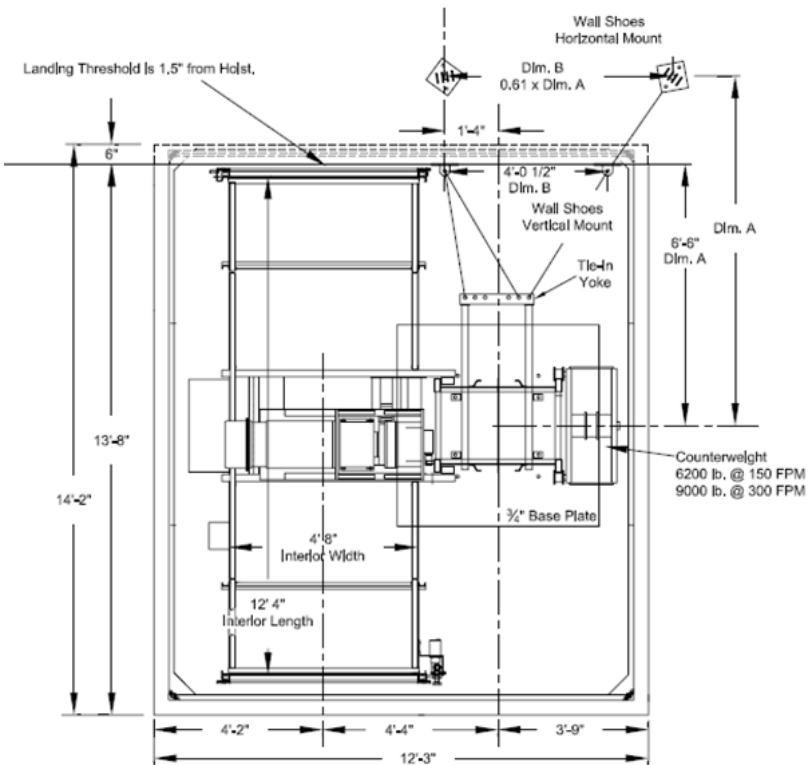
1.800.736.0882  
[www.mcdelevators.com](http://www.mcdelevators.com)



# US-60-1RX 6,000 lb Capacity Rack & Pinion Construction Elevator

## DESIGN NOTES

- Assuming 2,000 psf compacted soil, foundation is 12" thick 4,000 psi concrete pad with single mat of #5 rebar on 10" centers, located 3" from the bottom. Specific foundation loading and/or design is available upon request.
- Construction elevators are designed to comply with ANSI A10.4. Use of products must conform to safe practice and applicable statutes, regulations, codes and ordinances. Drawings are illustrative only and do not necessarily depict exact configurations of products offered at a particular time.
- The drawings depict a left-hand elevator car. Right-hand elevator car arrangements are available.
- The US-60-1RX model designation encompasses the US-60-1R, 1RN and 1RA low and high speed elevator series. Project-specific drawings are available upon request.



Atlanta | Baltimore | Denver | Houston | Kansas City | Los Angeles | Tampa