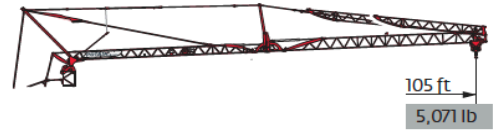
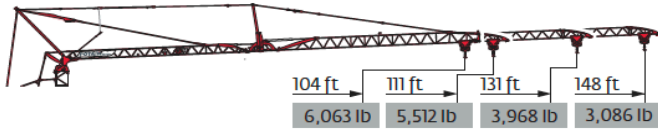


Load Curves



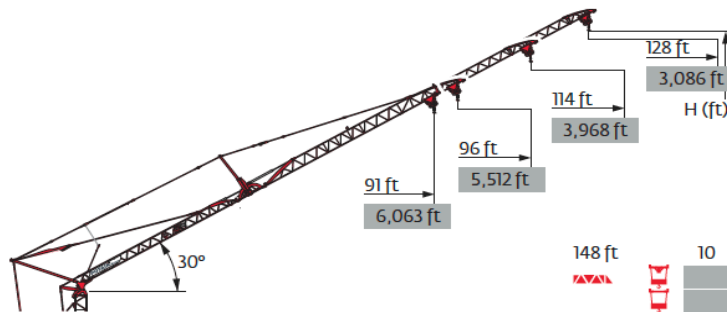
148 ft	10	42	46	52	59	66	73	78	79	85	92	98	105	112	118	125	131	138	148	ft
▲▲▲		13,228	11,685	9,921	8,598	7,496	6,614	-	6,063	5,512	5,071	4,630	4,299	3,968	3,638	3,417	3,197	2,976	2,756	lb
▲▲▲							6,614	-	6,063	5,512	5,071	4,630	4,299	3,968	3,638	3,417	3,197	2,976	2,756	lb
▲▲▲							6,614	6,504	5,952	5,401	4,960	4,630	4,299	4,079	3,748	3,527	3,307	3,086		lb

131 ft	10	46	52	59	66	72	81	85	85.3	92	98	105	112	118	125	131	ft
▲▲▲		13,228	11,023	9,700	8,378	7,496	6,614	-	6,173	5,622	5,181	4,850	4,409	4,189	3,858	3,638	lb
▲▲▲							6,614	-	6,173	5,622	5,181	4,850	4,409	4,189	3,858	3,638	lb
▲▲▲							6,614	6,614	6,063	5,622	5,181	4,850	4,519	4,189	3,968		lb

111 ft	10	51	59	66	72	79	85	91	95	98	105	111	ft
▲▲▲		13,228	11,023	9,700	8,598	7,716	7,055	6,614	-	5,952	5,512	5,181	lb
▲▲▲								6,614	-	5,952	5,512	5,181	lb
▲▲▲								6,614	6,283	5,842	5,512		lb

104 ft	10	52	59	66	72	79	85	92	96	98	104	ft
▲▲▲		13,228	11,244	9,921	8,818	7,937	7,275	6,614	-	6,173	5,732	lb
▲▲▲								6,614	-	6,173	5,732	lb
▲▲▲								6,614	6,504	6,063		lb

148 ft	10	45	52	59	66	72	79	84	92	98	105	ft
▲▲▲		13,228	11,023	9,480	8,378	7,496	6,614	-	5,622	5,181	4,740	lb
▲▲▲							6,614	-	5,622	5,181	4,740	lb
▲▲▲								6,614	5,952	5,512	5,071	lb



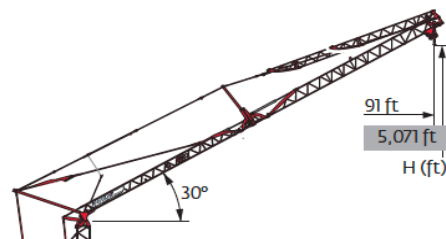
	148 ft	131 ft	111 ft	104 ft
H+2	167	159	-	-
H+1	157	149	-	-
H+0	148	139	129	126

148 ft	10	64	68	72	79	85	92	98	105	112	118	125	128	ft
▲▲▲		6,614	-	5,732	5,181	4,630	4,189	3,858	3,527	3,307	3,086	2,866	2,756	lb
▲▲▲														lb
▲▲▲														lb

131 ft	10	70	74	79	85	92	98	105	114	ft
▲▲▲		6,614	-	5,732	5,181	4,740	4,409	4,079	3,638	lb
▲▲▲										lb
▲▲▲										lb

111 ft	10	79	82	85	92	96	ft
▲▲▲		6,614	-	5,952	5,512	5,181	lb
▲▲▲							lb







104 ft	10	80	84	85	91	ft
▲▲▲		6,614	-	6,173	5,732	lb
▲▲▲						lb







10	70	73	79	85	91	ft	
▲▲▲		6,614	-	5,732	5,181	4,740	lb
▲▲▲							lb

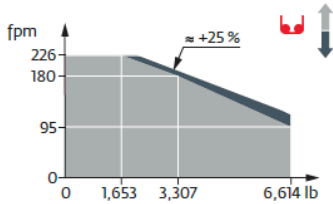
	148 ft	131 ft
H+1	-	126
H+0	116	

Mechanisms

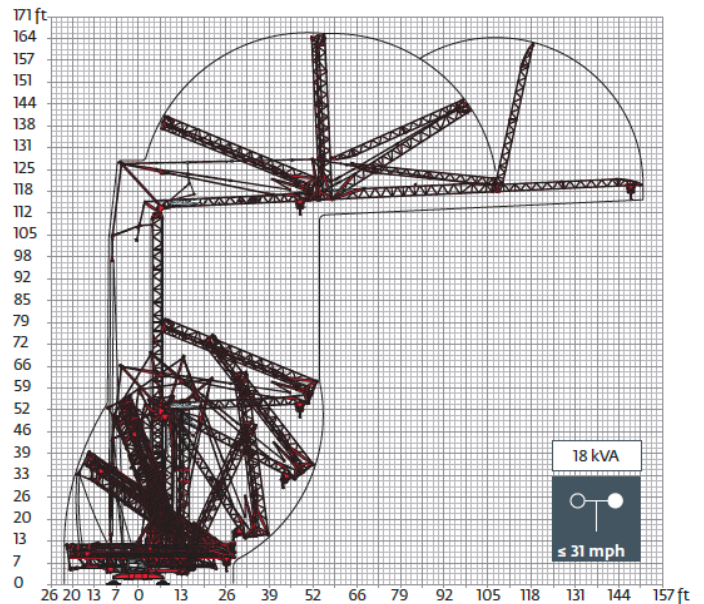
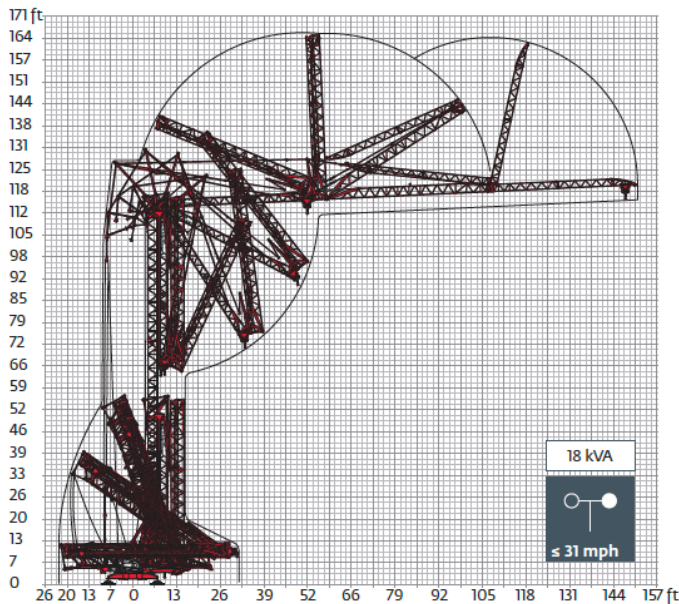
480 V - 60 Hz													hp	kW
	20 LVF 15 Optima	fpm	11	56	95	180	226	5	28	48	90	113	20	15
		lb	6,614	6,614	6,614	3,307	1,653	13,228	13,228	13,228	6,614	3,307		
	5 DVF 5	fpm	49 - 98 - 131 (4,409 → 13,228 lb) 49 - 98 - 180 (0 → 4,409 lb)									5.5	4	
	RVF 151 Optima+	rpm	0 → 0.8									5.5	4	
	TVF 324	fpm	82									2 x 4	2 x 3	

 IEC 60204-32	 kVA
480V (+6%-10%) 60 Hz	 22 kVA  25 kVA

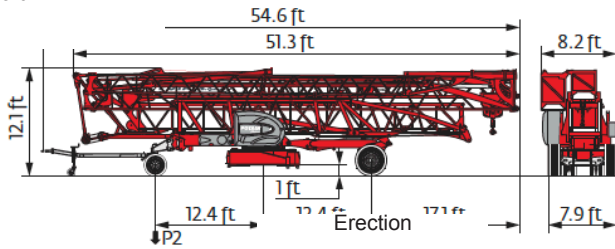
20 LVF 15 Optima



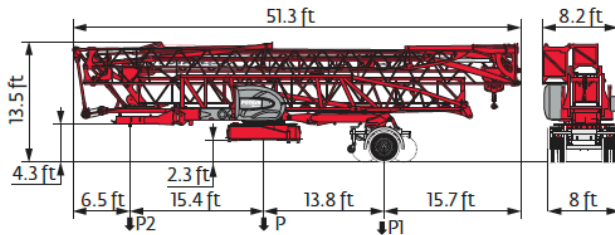
Erection



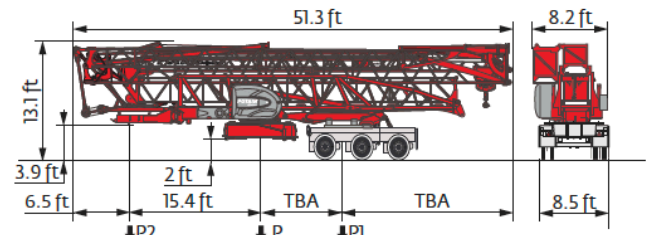
Transport



	mph	P (lb)	P1 (lb)	P2 (lb)
DJ100/S120	6	42,682	25,333	17,348
DJ105/S125	15.5	43,321	25,796	17,524



	mph	P (lb)	P1 (lb)	P2 (lb)
SL121/J135	15.5	44,533	28,219	16,314



	P (lb)	P1 (lb)	P2 (lb)
North America Highway Axle	i	i	i

- R** Rear slewing radius
- Reactions in service
- Reactions out of service
- ▲** Weight without load, without ballast, without transport axles, with max. jib and standard height
- Total ballast weight
- Standard equipment
- Options
- kVA** Required power
- i** Consult us
- Hoisting
- Trolleying
- Slewing
- Travelling

i This commercial document is not legally binding. For any technical information, please refer to the corresponding Instructions.